

Specifications

備注 (Remark)

1. 材料 (Material)

膠芯: PA9T/LCP+30%G.F UL94V-0, 顏色: 黑色

Housing: PA9T/LCP+30%G.F UL94V-0, Color: Black

端子: 黃銅

Contact: Brass

2. 特性 (characteristics):

額定電流: 3.00AMP

Rating Current: 3.00AMP

接觸阻抗: 20mΩ Max

Contact Resistance: 20mΩ Max

絕緣阻抗: 1000MΩ Min

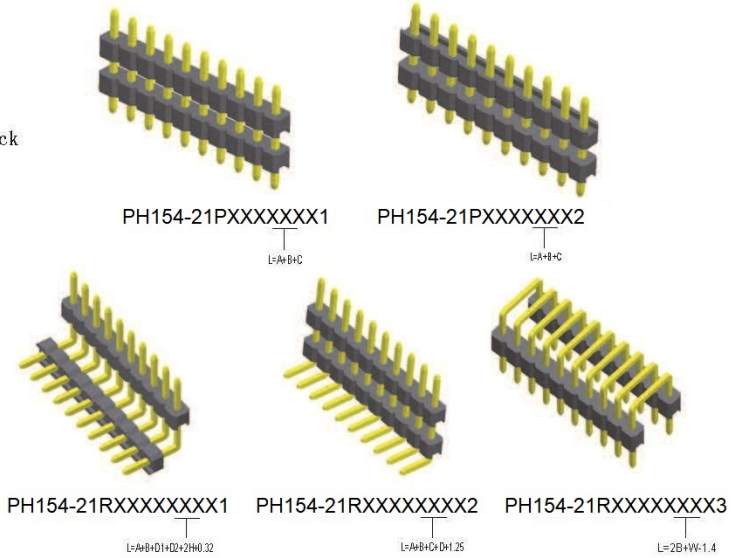
Insulating Resistance: 1000 MΩ Min

耐電壓: AC 500V/分鐘

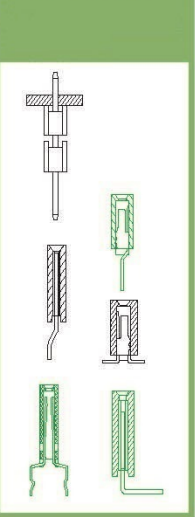
Withstanding Voltage: AC 500V/Minute

溫度範圍: -40° C to +105° C

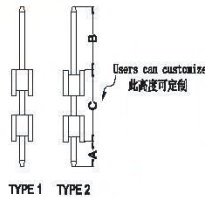
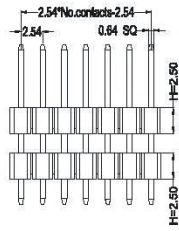
Temperature Range: -40° C to +105° C



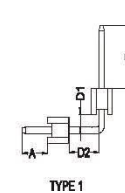
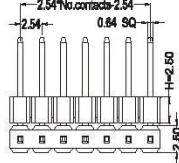
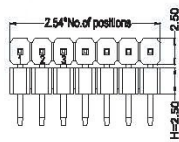
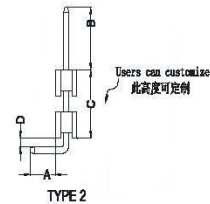
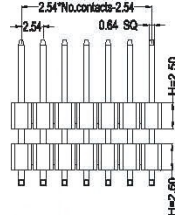
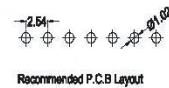
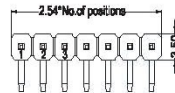
Mating With/配對母座:



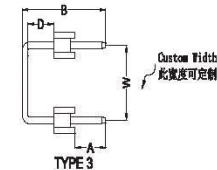
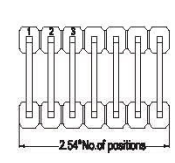
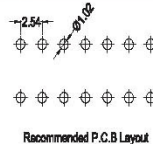
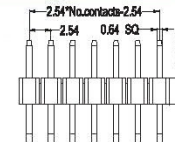
Dimension anithesees list				
ITEM	A	B	C	H
Standard	2.4/3.0	3.0/4.0/5.0/6.0		1.0 1.7 2.5
Alternate				1.5 2.0 2.8



Dimension anithesees list					
ITEM	A	B	C	D	H
Standard	3.00	3.0/4.0/5.0/6.0		0.6/1.2	1.0 1.7 2.5
Alternate					1.5 2.0 2.8



Dimension anithesees list					
ITEM	A	B	D1	D2	H
Standard	3.00	3.0/4.0/5.0/6.0			1.0 1.7 2.5
Alternate					1.5 2.0 2.8



Dimension anithesees list					
ITEM	A	B	D	W	H
Standard	3.60	3.0/4.0/5.0/6.0	1.20		1.0 1.7 2.5
Alternate					1.5 2.0 2.8

PIN HEADER

PH154-21

X

XX

XX

XXX

X

X

Contact Shape:
P: Straight
R: Right Angle

No. Of Pins Per Row
01~40P

Contact Plating
Full Of Gold
G0=0.8u"
~

G9=30u"
S1=Ordinary Tin Plated
S2=Matte Tin Plated
S3=Tin-plated High-temperature

Length Of Terminal

Packing
A: PE Bag
R: Tape & Reel
T: Tube
D: Tube+CAP
E: Tray

Journal Number
1: Type1 (without Post)
2: Type2 (with Post)
3: Type3